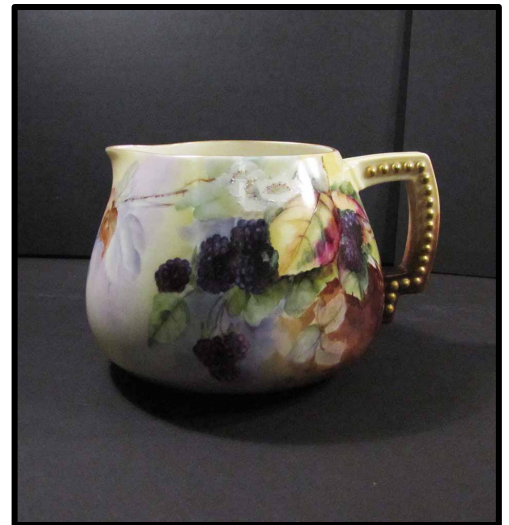


From the Museum Collection



AVM #PN21183

This hand painted pitcher by Josephine Wark is another example of someone using nature as inspiration. She was inspired by the environment around her home at Klistsa Lodge on Sproat Lake, here the blackberry is her object of choice. You can find this pitcher on display with other pottery pieces by Josephine in the Made By Hand display in the Alberni Valley Museum.



AVM #1985.14.4



AVM #1971.80.4

In this painting bright yellow chrysanthemums caught the artist's eye. The bird in the painting is also drawn to these cheerful flowers. This piece was painted sometime before 1971 and is not signed and the artist is unknown.

Attached you will find the instructions on how to make a paper-mache bowl. When it is ready decorate, step outside and see what inspires you.